

**BITE-SIZED ASSESSMENT 1 (2017) LA1**  
**PRIMARY 3**  
**SCIENCE**

**Tuesday**

**7 February 2017**

**30 min**

Name: \_\_\_\_\_ ( ) Class: 3.( ) Parent's Signature. \_\_\_\_\_

**INSTRUCTIONS TO PUPILS**

- 1 Do not turn over the pages until you are told to do so.
- 2 Follow all instructions carefully.
- 3 There are 10 questions in this booklet.
- 4 Answer ALL questions.
- 5 The marks are given in the brackets [ ] at the end of each question or part question.

<b>Question Paper</b>	<b>Possible Marks</b>	<b>Marks Obtained</b>
<b>Total</b>	<b>10</b>	

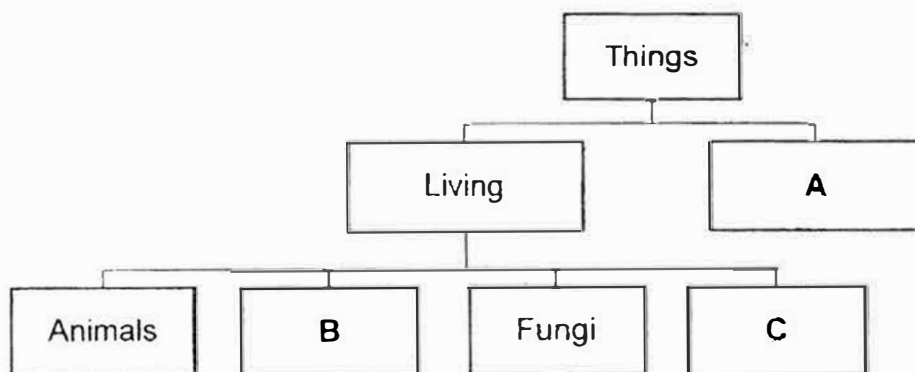
---

**This question paper consists of 10 printed pages (inclusive of cover page).**

### Section A: Multiple-Choice Questions (5 marks)

For each question from 1 to 5, four options are given. One of them is the correct answer. Make your choice and write your answer, 1, 2, 3 or 4, in the brackets provided. (5 x 1 mark)

- 1 The classification diagram below shows how things can be grouped.

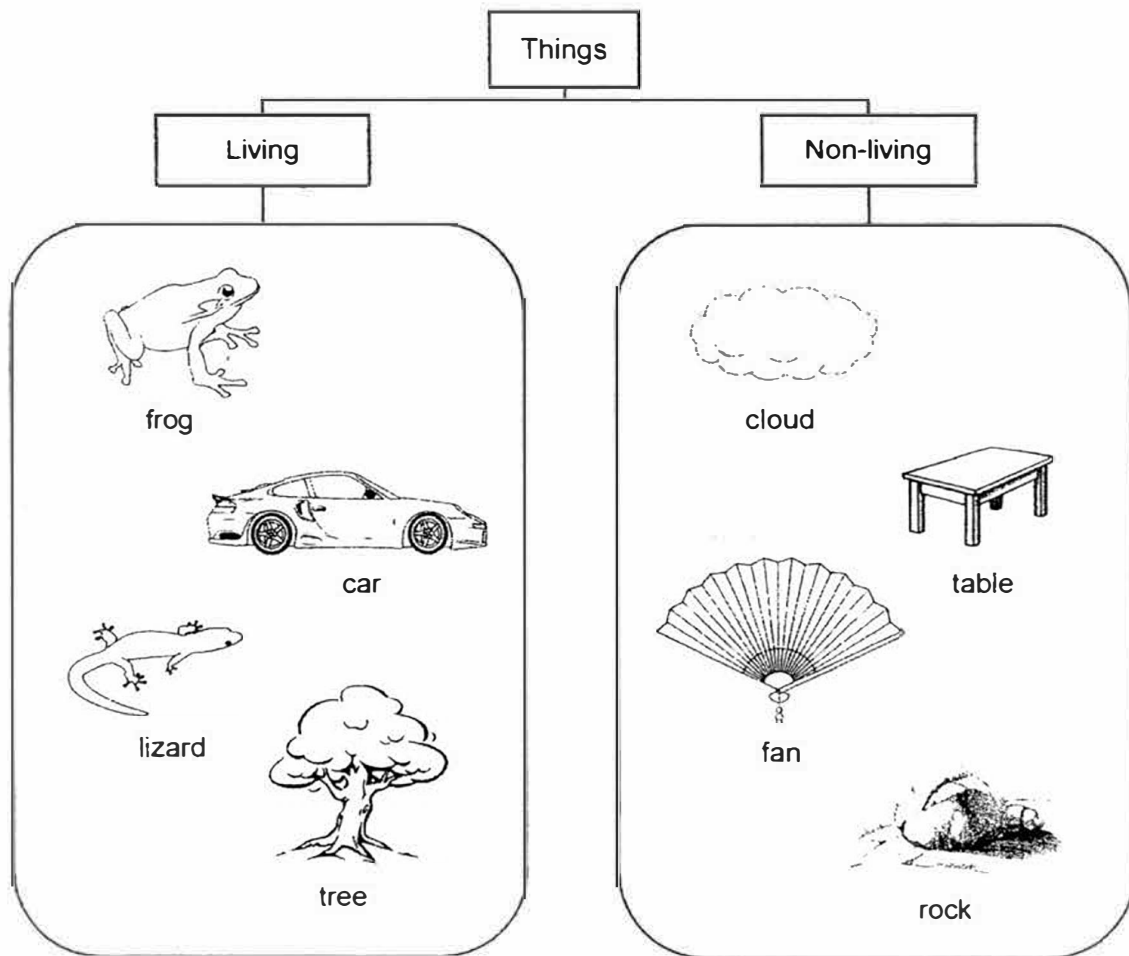


Which one of the following best represents A, B and C?

	A	B	C
(1)	Things	Living	Non-living
(2)	Plants	Non-living	Bacteria
(3)	Non-living	Plants	Bacteria
(4)	Living	Bacteria	Fungi

( )

2 Look at the classification diagram below.

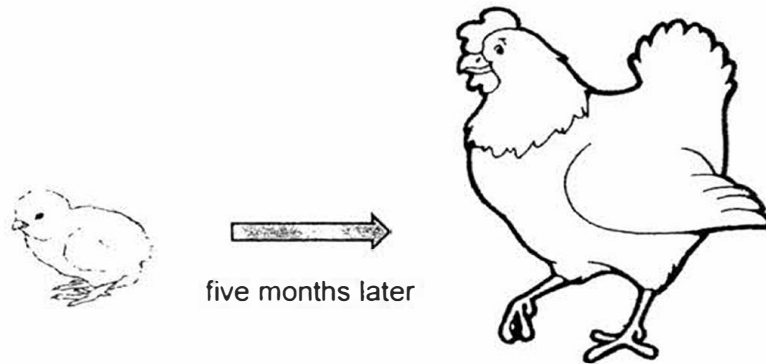


Which one of the things above has been grouped incorrectly?

- (1) car
- (2) tree
- (3) rock
- (4) cloud

( )

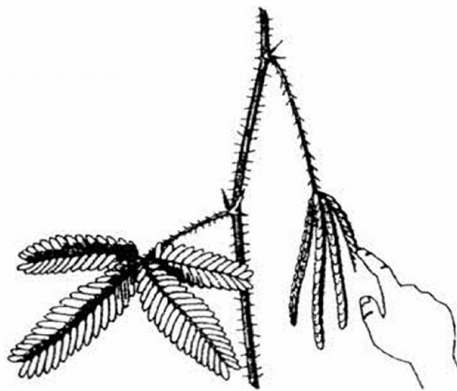
- 3 Which characteristic of living things does the picture below show?



- (1) Living things can grow.  
 (2) Living things can reproduce.  
 (3) Living things can move from one place to another.  
 (4) Living things can respond to changes around them.

( )

- 4 Andy noticed that the leaves of the mimosa plant closed when he touched them.

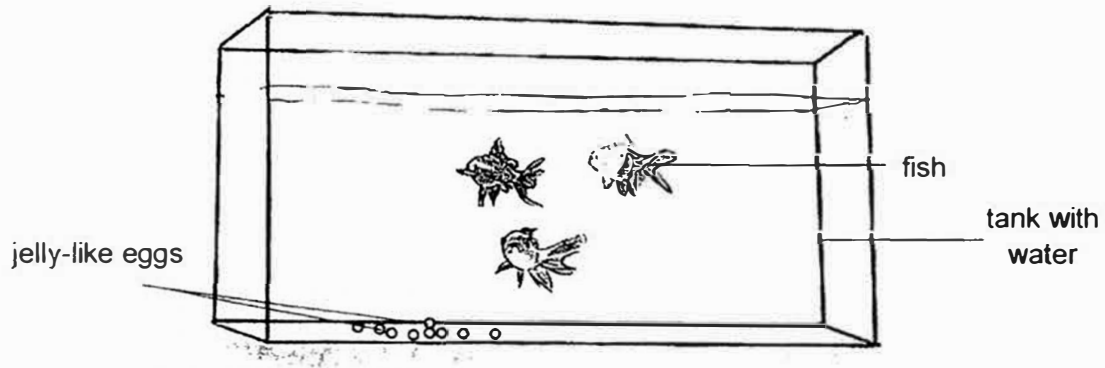


What can Andy conclude from his observation of the plant?

- (1) It grows.  
 (2) It reproduces.  
 (3) It responds to changes around them.  
 (4) It needs air, food and water to survive.

( )

- 5 Tommy kept three fish in his tank. One day, he discovered a number of small jelly-like eggs at the bottom of the tank.



Tommy concluded that his fish \_\_\_\_\_.

- (1) can grow
- (2) can reproduce
- (3) need air, food and water to survive
- (4) can respond to changes around them

( )

**Section B: Structured and Open-Ended Questions (5 marks)**

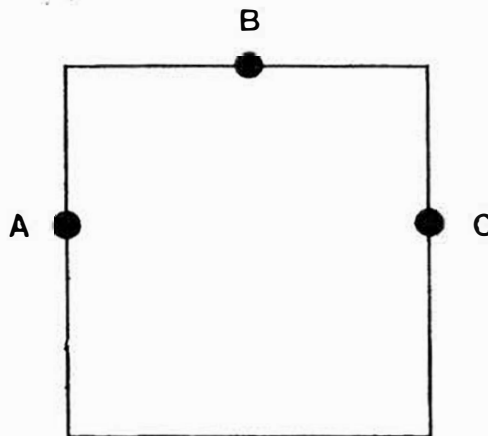
For questions 6 to 10, write your answers in this booklet.

The number of marks available is shown in brackets [ ] at the end of each question or part question.

- 6 The picture below shows a plant which was grown in a box with a hole.



- (a) What was the position of the hole in the box? Circle the letter, A, B or C below, that best represents the hole. [½]

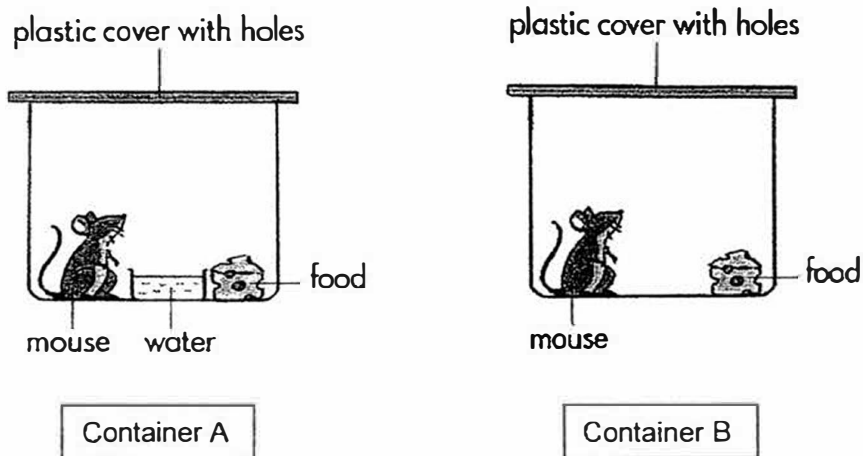


- (b) Which characteristic of living things does the plant above show? [½]

---

---

- 7 In an experiment, two similar mice were kept in two separate containers as shown below.



- (a) In which container will the mouse survive longer? [½]

---

- (b) In the table below, tick ( ✓ ) the characteristic of living things shown in the above experiment. [½]

Characteristics of Living Things	Tick ( ✓ )
They can grow.	
They can reproduce.	
They need air, water and food to stay alive	
They can respond to changes around them.	

- 8 The table below shows the characteristics of four things, A, B, C and D. A tick ( ✓ ) shows the presence of that characteristic.

Things	Reproduces	Needs water	Has legs	Able to move from place to place
A	✓	✓	✓	✓
B	✓	✓		✓
C	✓	✓		
D				✓

Based on the information above, write the letters 'A', 'B', 'C' or 'D' that best represents a dog and a train in the boxes given below. [1]

(a) dog:

(b) train:



9 Look at the 6 things listed below:

shirt	boy	bird
plant	hat	watch

(a) Classify the 6 things into 2 groups in the table below. Give suitable headings for each group. [½]

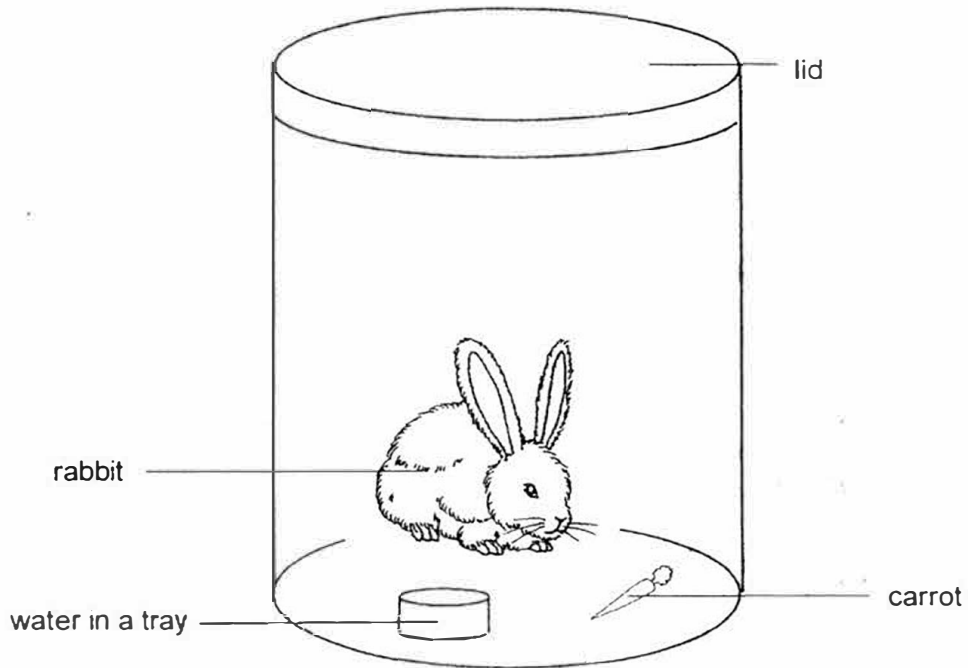


(b) State another way you can classify them. [½]

---

---

- 10 Tim placed his pet rabbit in a container as shown in the set-up below.



- (a) Tim's mother said that the rabbit will not survive after a few hours. Why will the rabbit not survive? [½]

---



---

- (b) What can Tim do to the set-up to make sure that the rabbit survives in the container? [½]

---



---

~ END OF PAPER ~

**EXAM PAPER 2017**

**LEVEL** : PRIMARY 3  
**SCHOOL** : ACS (Junior)  
**SUBJECT** : SCIENCE  
**TERM** : Bite-sized Assessment 1

Q1	Q2	Q3	Q4	Q5
3	1	1	3	2

- Q6 (a) A  
(b) Living things respond to changes around them.
- Q7 (a) Container A  
(b) ✓, ✓, x, ✓
- Q8 (a) A  
(b) D
- Q9 (a) Living Things: ~~Boy~~, Plant, Bird  
Non-Living Things: ~~Hat, Shirt, Watch~~  
(b) By size.
- Q10 (a) It will not survive because there is no air.  
(b) He can poke holes in the lid.

END.